

Fostering the Cooperation between the Public & Private sector in R & D & I

International **RFID** Laboratory
VYSOKÁ ŠKOLA BAŇSKÁ TECHNICKÁ UNIVERZITA OSTRAVA
DONGGUK UNIVERSITY
Czech Republic South Korea

VŠB-Technical university of Ostrava Cooperation in R&D and Innovation Regional Innovation Strategy

Vladimir Kebo
MEYS Prague, March 31, 2010

created by: www.vizualizacekarta.cz

ILAB
International
RFID Laboratory





Moravia Silesia Region

VŠB-Technical University of Ostrava



Infrastructure for Cooperation with Industry

• *STP Ostrava a.s.*

• Business incubator

• RCTT

CAIT-TL2

... since 05/2008

• *Advanced construction technologies*

TL1 G

CAIT-TL3

• *Centers of applied R&D*

CAIT-TL1

... since 07/2008

• *Perspective area for R&D oriented
to ICT and FECS VŠB-TUO*

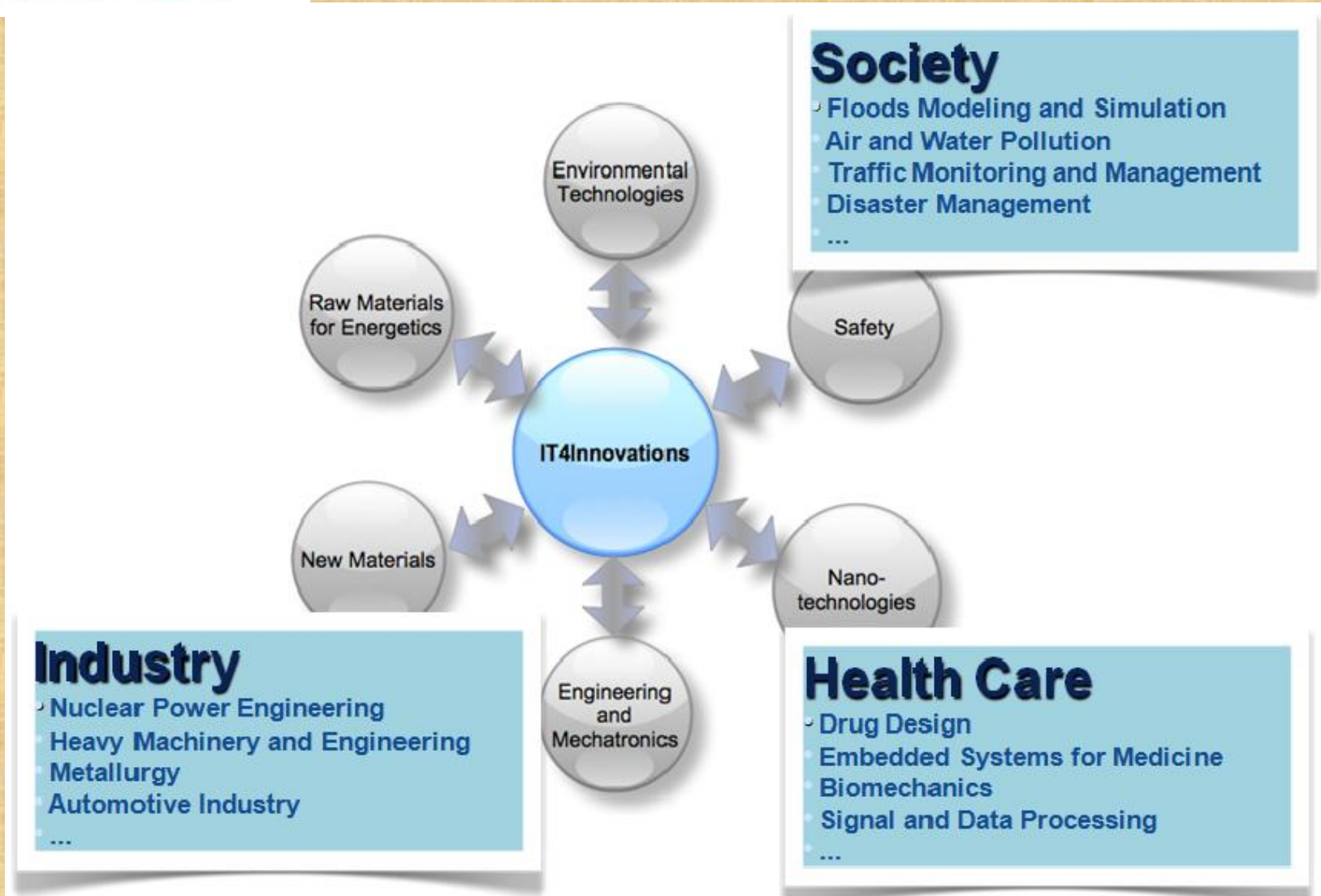
Realised objects of CAIT

Planned CAIT – up to 2015

Danuta Hübner – EU visit



IT4Innovations Research Context



IT4Innovation R&D

Applied and Basic Research

IT4People

IT4Disaster
Management

IT4Economy

SC4Simulations

SC4Industry

SC4Natural &
Biosciences

SC4Nanotechnology

EC4Innovations

EC4Industry

EC4Innovative
Medicine

Basic Research

Theory4IT

Softcomputing4IT

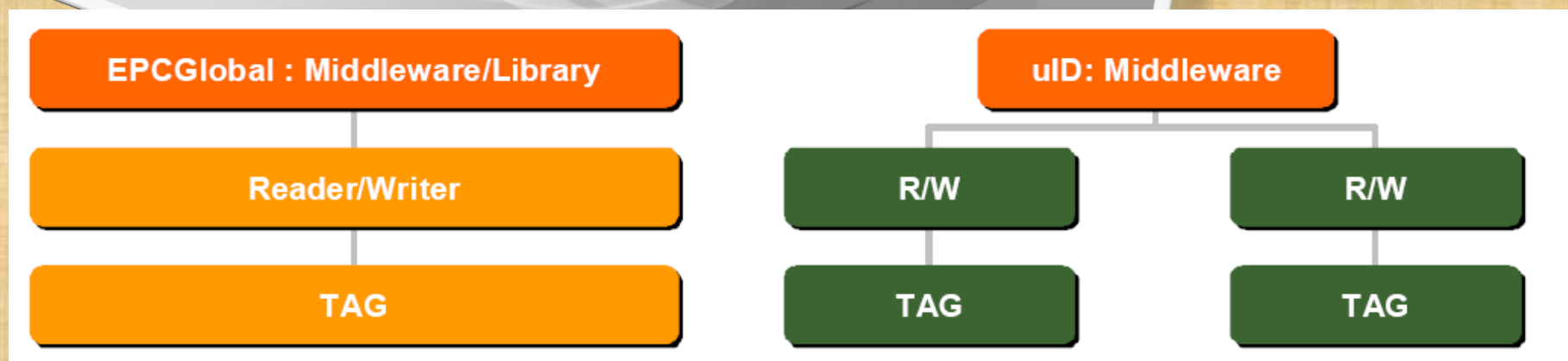
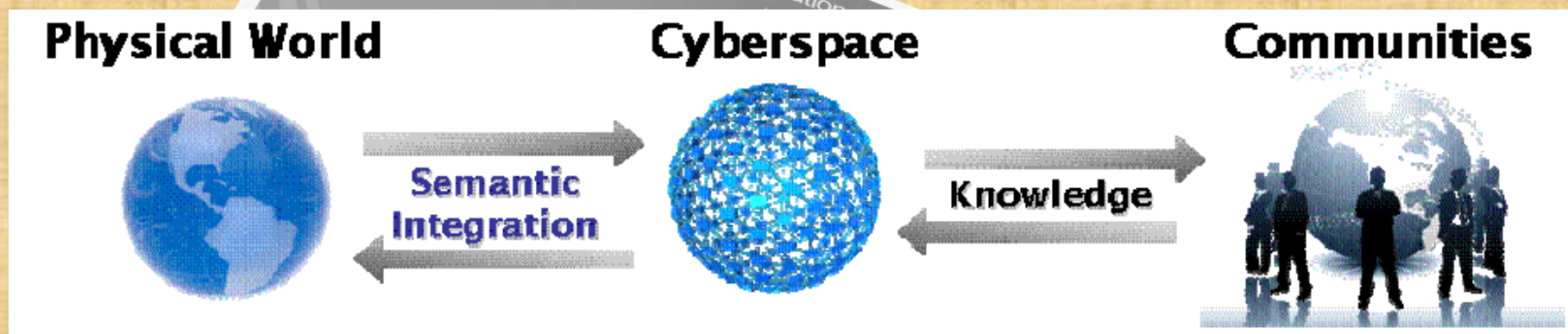
Knowledge4IT

Supercomputing Center

elnfrastructure

ILAB RFID International Lab

- Cyberspace links physical world information to communities



interoperability levels with EPCglobal and uID

ILAB RFID International Lab

- 8th April 2009 Official Opening Day by Dongguk partners, Korean ambassador, Hyundai Mot. Comp. President, GS1 delegate and Gaben comp. partner, and so on ...
- ILAB is cooperation lab between VŠB-TUO Department of Economics and Control System and Dongguk Uni. Department of Industrial and System Engineering



ILAB RFID Lab Major

**Research and development and Innovation -
cooperation with industry**

- 1. Automotive**
- 2. Healthcare**
- 3. Logistics**
- 4. Raw materials Industry**
- 5. Safety of Property and Persons**

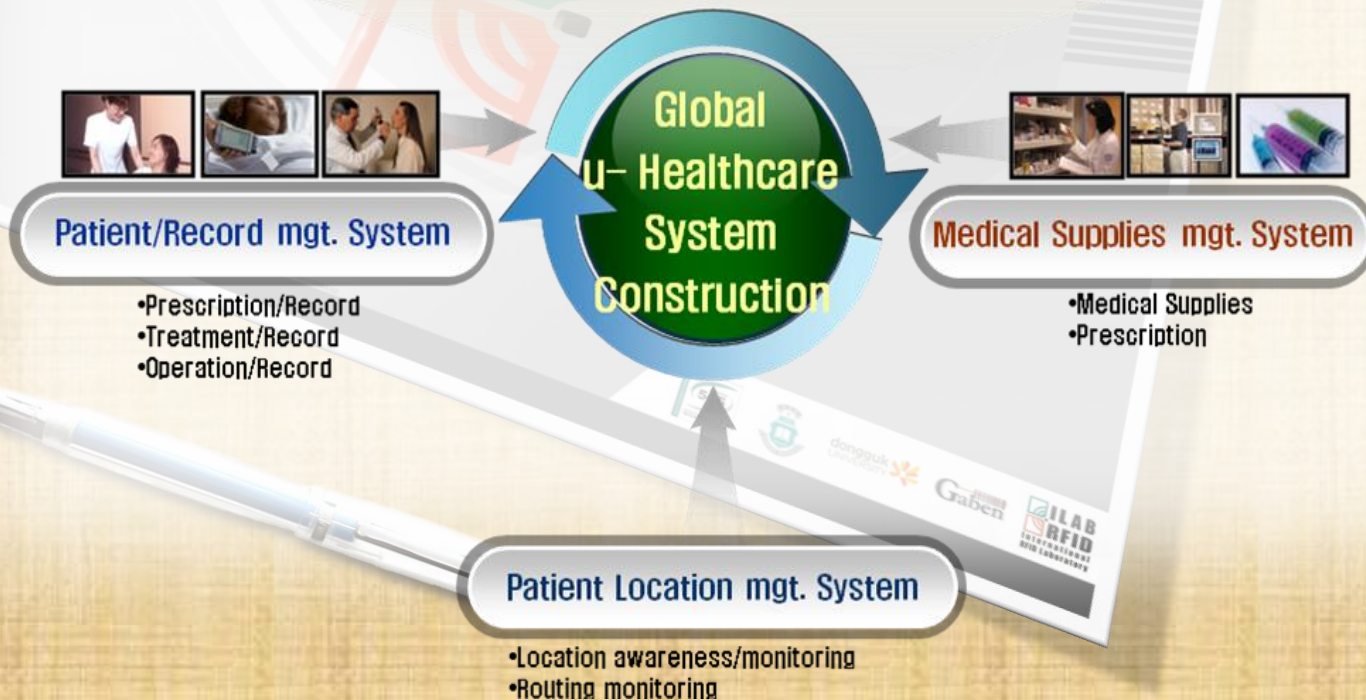
Automotive and Safety



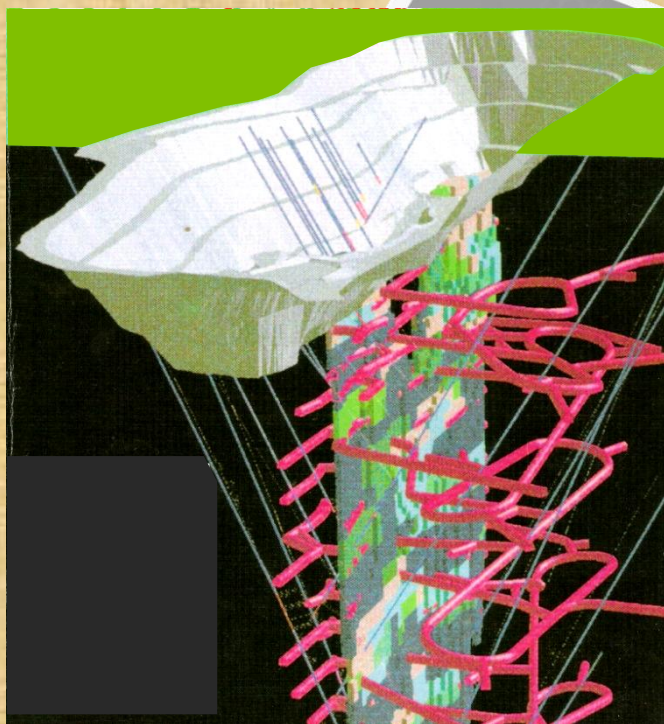
ILAB - Healthcare

1. Healthcare - Research, development and Innovation -cooperation with hospitals

Korean-Czech Cooperation In Research and Development



Logistics, Raw mat. Industry



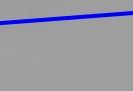
Typical example of transportation system development - the change of open-pit to underground mining system.

Excavators,
15

Sum -

Railways – transportation of excavated raw materials,
(25 stations, 500 km of rails)

Preparation, and
dumps
Sum - 7



Example of open-pit transportation system - parametric network.

Innovation Strategy

MSR 2010 - 2016

Global Goal:

Increase the economic competitiveness of Moravia Silesia Region at Global Markets.

Priority areas:

**Information and communication technology,
Energy and Environment protection,
Engineering, Metallurgy and material science,
Biomedical engineering,
Nanotechnology**



Innovation System

SWOT Analysis

Weaknesses

1. Absence of policy for innovation
2. Shortage of well qualified R&D workers
3. Low level of public R&D expenditures
4. Low level of entrepreneurial innovation support

Strengths

1. Knowledge potential in traditional branches
2. Strong Technical university VŠB-TUO
3. Investments of international companies – Automotive
4. Strong Clusters structure - EU support ERDF

Opportunities

1. New orientation of regional companies to Hi-tech
2. Strong connection Traditional – incoming industry
3. Development of Regional Center of Excellence
4. Private investments into R&D

Threats

1. Low production rate of R&D
2. Barriers between Knowledge institutions and Industry
3. Fragmentation of regional innovation infrastructure
4. Shortage of financial resources in region

MSR – Innovation Strategy

Priority Areas and Strategic Goals

Priority area	Strategic goal
<i>A - Technology Transfer</i>	Increase of commerce results of R&D
<i>B - Human Resources</i>	Human resources for Regional Innovation system
<i>C - Internacionalization</i>	Competitiveness of MSR in global economy
<i>D - Coordination and implement</i>	Consolidation and Development of RIS



International RFID Laboratory

VYSOKÁ ŠKOLA BAŇSKÁ TECHNICKÁ UNIVERZITA OSTRAVA

DONGGUK UNIVERSITY



Thank You
For your Attention



created by: www.vizualnikontakt.cz